



# CBS eLink

## Introduction

Creating new opportunities for support of eCommerce, web applications and legacy systems within CBS, eLink is a powerful, flexible XML based integration tool from Ebix.

eLink allows you to decide the most appropriate approach to data entry and opens up unlimited support for eCommerce applications. Using the power of XML and standard web development tools, it is possible to build an eCommerce framework in a fraction of the time required by conventional methods.

## eLink Processing

Specific purpose external applications can now be used to record client, policy and claims information which is passed to the CBS transaction engine and processed either in background or foreground as if the transaction had been entered in a conventional CBS data entry screen. Where required CBS will perform transaction validations, create accounting records, update masterfiles and return transaction output in XML format to the front end application.

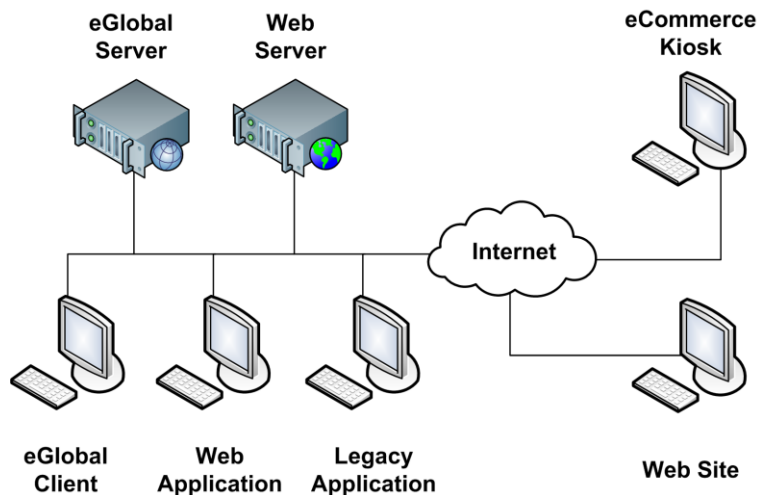


Front end applications can include external web sites, HTML pages created on your intranet, third party or in house developed applications.

External applications can now be developed using the most appropriate development tool for the job at hand. In particular, utilising the power of Internet based development tools it is possible to quickly and cost effectively develop applications that in a more efficient manner.

These new applications can be targeted to generate new business opportunities or to more efficiently handle routine tasks such as requests for policy documentation, certificates of currency and handling of accounting enquiries.

The powerful graphical nature of web based applications delivers a message that enhances your profile with clients and provides a relevant, visually appealing application for your clients to interact with you.





## CBS Integration

Seamless integration with standard CBS functions provides workflow controls and full audit tracking from the external application. You may, for example, allow clients and prospects to submit requests for quotes on your web site. The client or prospect prepares a quote request on your web site, this request is uploaded into CBS via eLink and the broker responsible for the client notified by email or an entry in their CBS Diary to action the quote.

On acceptance the quote can be converted into a policy using the standard 'Convert a Quote' option within CBS. Importantly data entered into the quote request on the web can be uploaded into a CBS Coverage Summary to build a policy record, calculate a premium if the application is auto rated, invoice the transaction and create all necessary client and insurer documentation.

Since quote requests and other front end transactions are created externally to CBS, the important consideration of security and necessary controls relating to access of your data can be easily implemented.

## System Requirements

eLink is an optional module available under licence from Ebix. Contact your local Ebix office for prices, technical details or additional information.